



SW-X all-sky imager

Capturing sky conditions



ABOUT

SW-X all-sky imagers provide local, continuous monitoring of rapidly changing sky and weather conditions, delivering essential observational data for a range of applications.





Designed for extreme weather conditions and remote locations, this advanced instrumentation system offers valuable solutions for the management of energy systems including solar as well as atmospheric science research and operations.

Several sky imagers can be connected through a local area network to extend the field of view and capture three-dimensional cloud structure data.

A user-friendly web application simplifies system configuration, monitoring, data visualization and analysis.



KEY BENEFITS

-  **ULTRA-LOCAL DATA**
Continuous high-resolution visible images and derived meteorological products
-  **FIELD-PROVEN**
Plug & play, robust, reliable, supports Cloud and Edge computing with 4G and internal storage
-  **FLEXIBLE USAGE**
Expandable with additional sensors, extensive data sharing options, dedicated web interface
-  **HEAVY-DUTY DESIGN**
Tailored for harsh environments, including dust, sea sprays, extreme temperatures and humidity

SOLUTIONS

- Energy systems management - solar forecasting
- Cloud-related research - cloud classification, monitoring, remote sensing data analysis, etc.
- Atmospheric networks - cloud products, data assimilation, maintenance decision-making, etc.

FEATURES

Network camera

Fisheye lens, 360° field of view, 5 Mpx, glass dome

Weather sensors

Pyranometer(s) & air temperature

Frame rate

1 to 6 frames per minute

Operating conditions

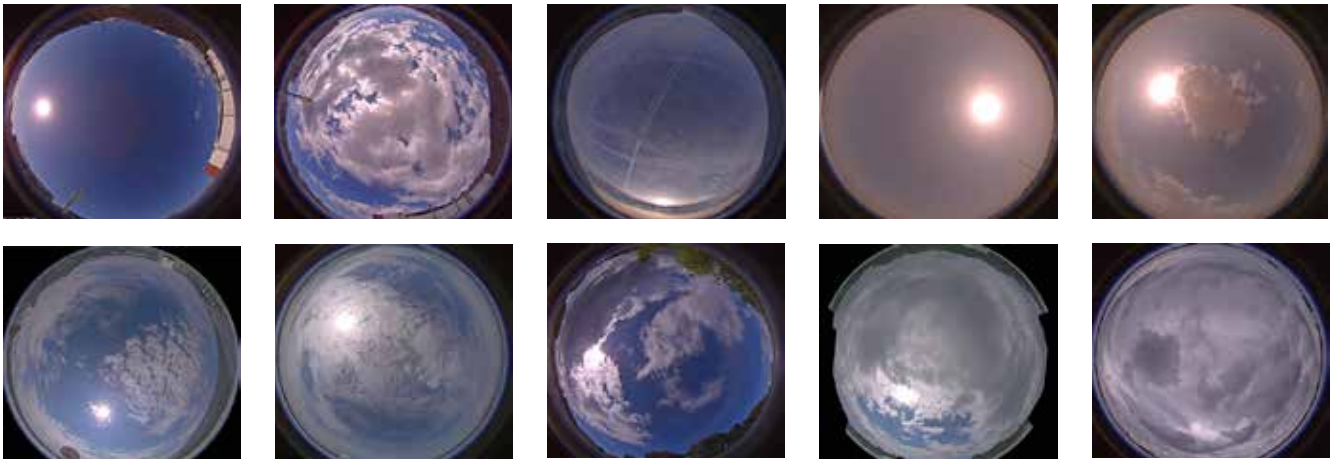
-20°C to 50°C, remote access & configuration



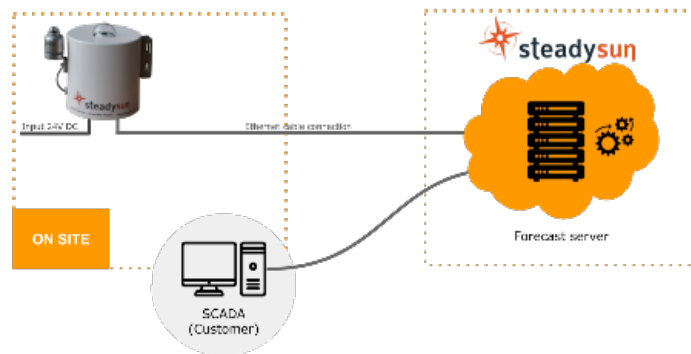
CERTIFIED CERTIFIED



ALL SKY IMAGES

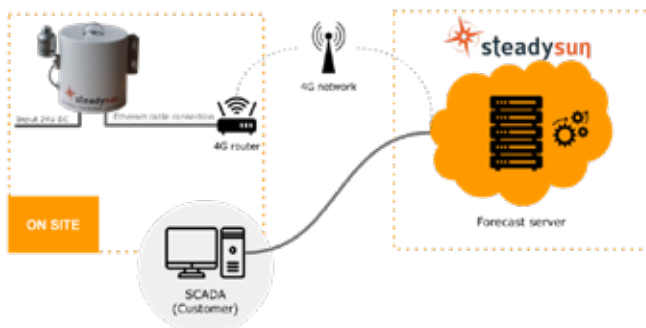


Cloud configuration



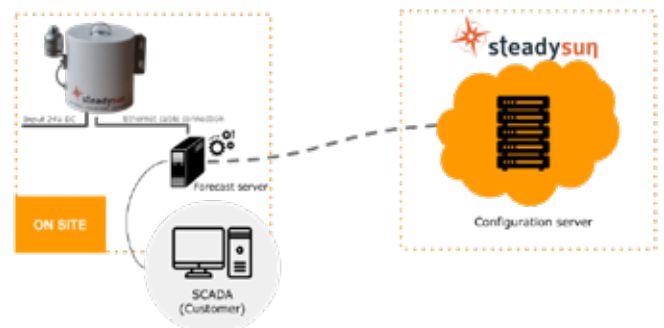
Reliable internet connection required
upload 3.2 Mbps, 50ms latency

Cloud configuration using cellular network



Reliable internet connection required
upload 3.2 Mbps, 50ms latency

Edge configuration



Reliable VPN connection required

